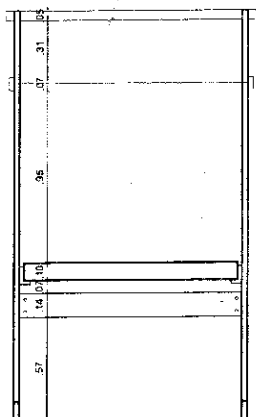


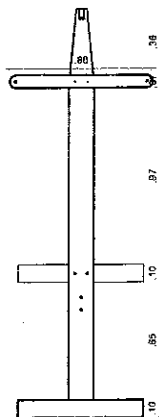
**PLANTA BAIXA**

BARRACA EXPOSITORA ESCALA 1/25



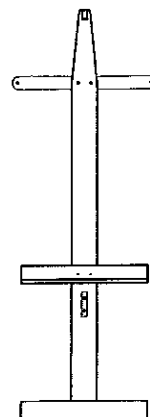
**VISTA FRONTAL**

BARRACA EXPOSITORA ESCALA 1/25



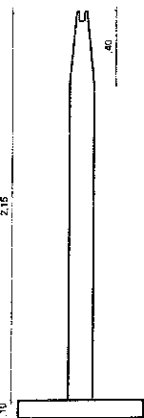
**VISTA LATERAL EXTERNA**

BARRACA EXPOSITORA ESCALA 1/25



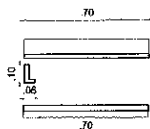
**VISTA LATERAL INTERNA**

BARRACA EXPOSITORA ESCALA 1/25



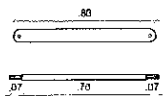
**PEÇA 01**

BARRACA EXPOSITORA ESCALA 1/25



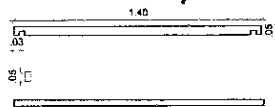
**PEÇA 02**

BARRACA EXPOSITORA ESC. 1/25



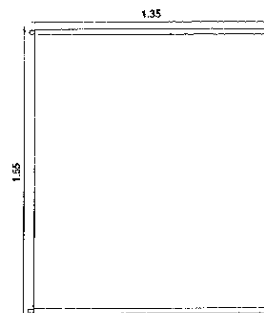
**PEÇA 03**

BARRACA EXPOSITORA ESC. 1/25



**PEÇA 04**

BARRACA EXPOSITORA ESC. 1/25

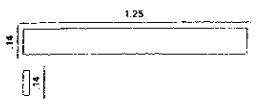


**VISTA COBERTA**

BARRACA EXPOSITORA ESCALA 1/25

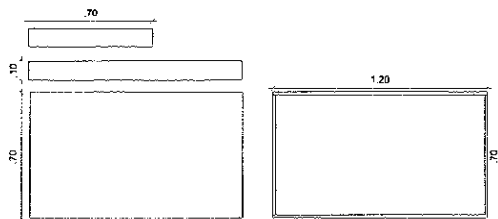
TECIDO 1.55 x 1.35

PEÇA 03



**PEÇA 05**

BARRACA EXPOSITORA ESCALA 1/25



**PEÇA 06**

BARRACA EXPOSITORA ESCALA 1/25



PRANCHA

**01**

PROJETO: BARRACA EXPOSITÓRIA

PROPRIETÁRIOS: SECRETARIA EXECUTIVA DE SEGURANÇA ALIMENTAR E ECONOMIA SOLIDÁRIA

ESCALA

1/25

DESENHOS:  
INDICADOS



**GOVERNO  
DA PARAÍBA**

**VIVA!**  
*o trabalho.*

OUT/2016